

HEAVY-DUTY VERTICAL MACHINING CENTER

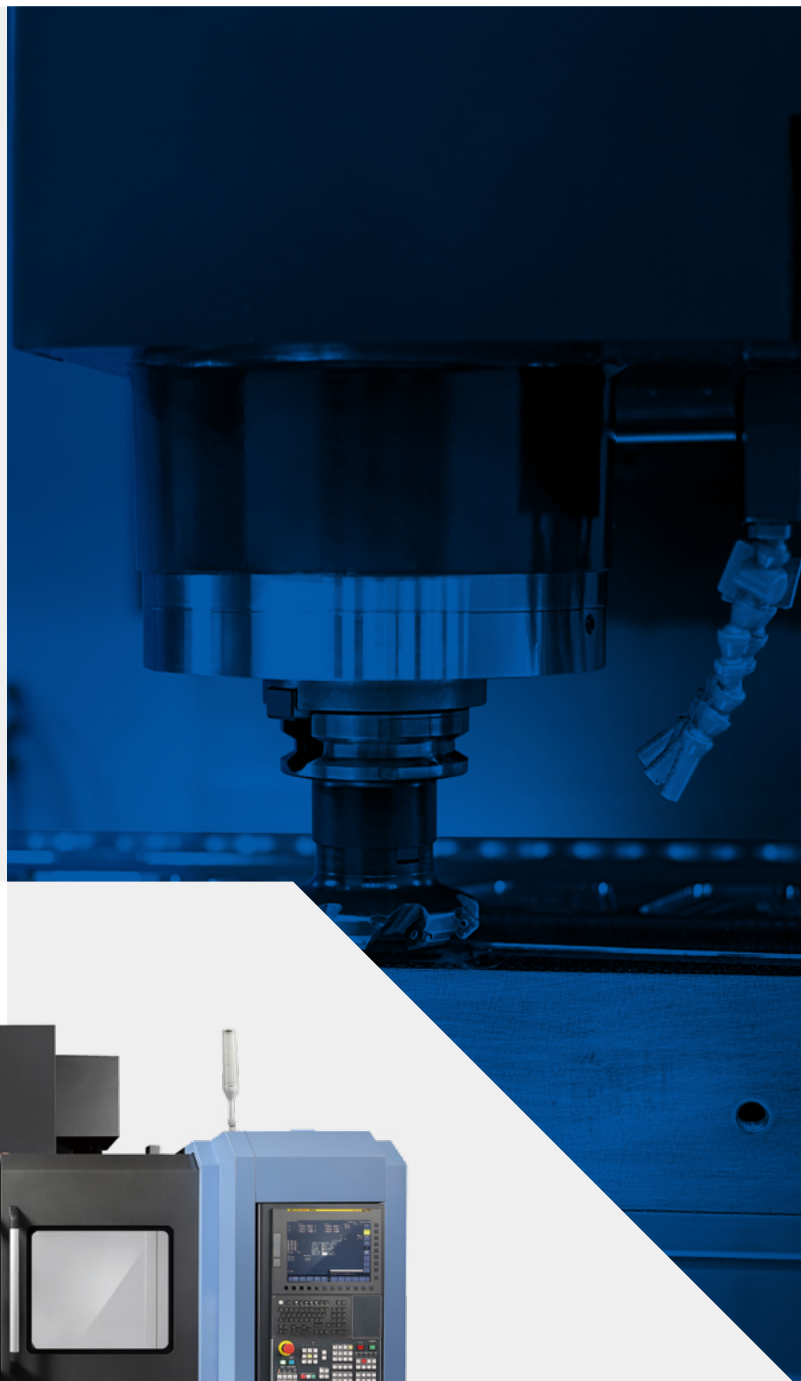
Mynx 5400 · 6500 · 7500 · 9500

Mynx 5400II

Mynx 6500II

Mynx 7500II

Mynx 9500



Mynx II series

The Mynx II series offers a wide product line-up with a Y-axis travel distance that ranges from 550 mm (21.7 inch) to 950 mm (37.4 inch) and a diverse selection of spindle gear type. The wide product line-up enables operators to pick the right machine to work on all materials and sizes.

The Mynx machines are well-known for their durability, stability and strength to machine tough parts. In addition, the DN Solutions' user-friendly EZ work functions have been incorporated to increase the convenience when operating.

CONTENTS

Product Overview

Basic Information

Detailed Information

Customer Support Service

04 Basic Structure

04 Axis System

05 Spindle

05 Table

06 Tool Changer

07 Standard / Optional Specifications

08 Peripheral Equipment

09 Fanuc i Plus

10 EZ WORK

11 HEIDENHAIN TNC620

12 SIEMENS 828D

13 Power | Torque

16 Dimensions

17 Table Dimensions

18 Machine Specifications

19 Customer Support and Services

19 Global Network



**ABILITY TO MACHINE
ANY WORKPIECE SIZE AND
MATERIAL**



- Wide product line-up with a Y-axis travel distance that ranges from 550 mm (21.7 inch) to 950 mm (37.4 inch) and a diverse selection of spindle gear type.

**PRODUCTIVITY, PRECISION,
STABILITY, AND STRENGTH**

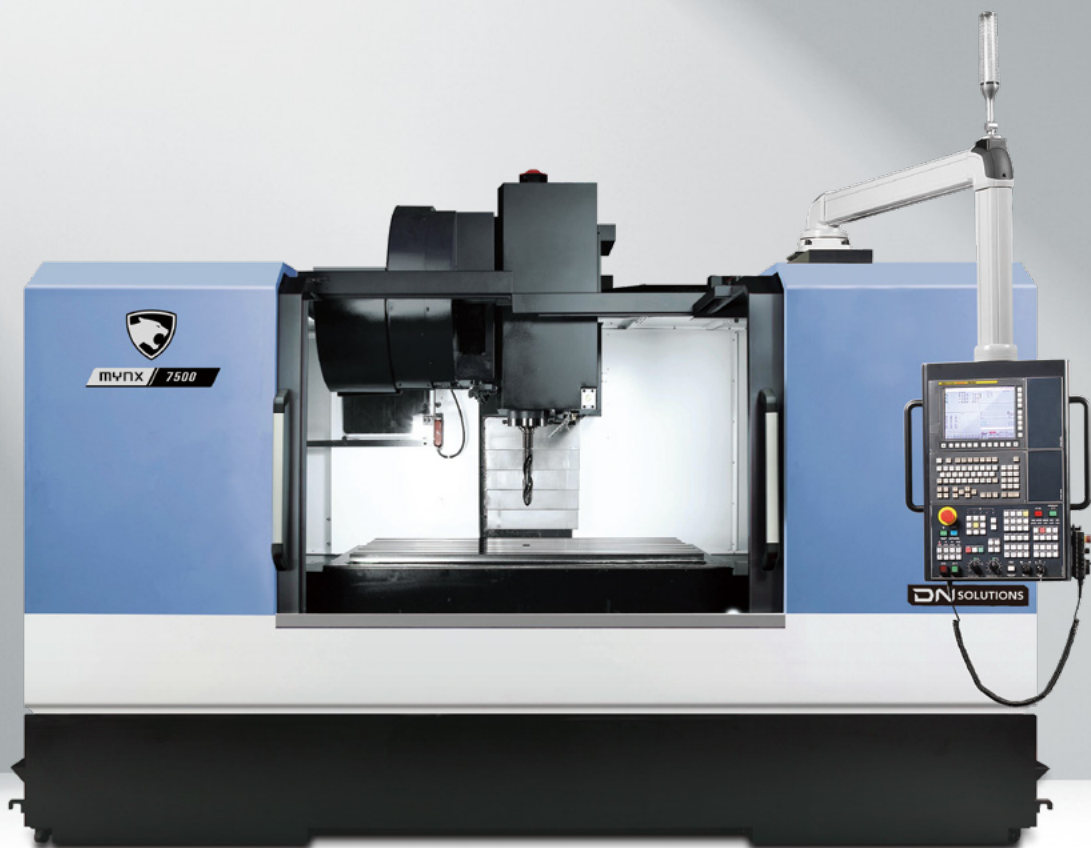


- Rigid machine structure that provides durability for performing heavy-duty machining and stability for accurate precision machining.
- Higher productivity can be achieved with the CAM-type tool changer that supports faster tool changing.

**USER-FRIENDLY
OPERATION**



- Easy operation for user's convenient machine operation.
- EZ Work functions to improve our customer experience when operating.



BASIC STRUCTURE

The Mynx II series offers a wide line-up. High-rigidity machine structure provides high durability and stable accuracy during heavy duty cutting.

Travel distance (X / Y / Z axis)

Mynx 5400 II, Mynx 5400/50 II

1020/550/530 mm
(40.2/21.7/20.9 inch)

Mynx 6500 II, Mynx 6500/50 II

1270/670/625 mm
(50.0/26.4/24.6 inch)

Mynx 7500 II, Mynx 7500/50 II

1525/770/625 mm
(60.0/30.3/24.6 inch)

Mynx 9500

2500/950/850 mm
(98.4/37.4/33.5 inch)



AXIS SYSTEM

Applied a highly rigid box guideway structure suitable for heavy cutting.

The extended box-type guideways improve the machine durability as well as rigidity and stability.

Rapid traverse rate (X / Y / Z axis)

Mynx 5400 II, Mynx 5400/50 II

Mynx 6500 II, Mynx 6500/50 II

Mynx 7500 II, Mynx 7500/50 II

30/30/24 m/min
(1181.1/1181.1/944.9 ipm)

Mynx 9500

16/16/16 m/min
(629.9/629.9/629.9 ipm)

Surface Finish

The surface of moving elements are coated with Rulon 142 material to reduce friction and stick-slip. This material is carefully hand-scraped to achieve optimum accuracy.



SPINDLE

Users can select spindles of various driving systems and specifications according to the workpiece material.

Drive Systems

The Mynx II series spindles support Direct-driven, Belt-driven, Gear-driven, Built in-driven systems. Dual contact tool system support as standard.

* The results, indicated in this catalogue are provides as example. They may not be obtained due to differences in cutting conditions and environmental conditions during measurement.



Dual Contact Spindle

The system enables simultaneous dual-contact of tapered side using elastic deformation of the spindle and perfect gauge control.



Mynx 9500 Gear-driven spindles

Models	Taper	Standard ¹⁾	Optional ¹⁾
Mynx 5400 II *** Mynx 6500 II *** Mynx 7500 II ***	ISO #40	8000r/min (15/11 kW (20.1/14.8 Hp), 286.5 N·m (211.4 ft-lbs))	12000r/min (15.6 kW (20.9 Hp), 165.5 N·m (122.1 ft-lbs))
Mynx 5400/50 II Mynx 6500/50 II	ISO #50	6000r/min (15/11 kW (20.1/14.8 Hp), 286.5 N·m (211.4 ft-lbs))	6000r/min (18.5/15 kW (24.8/20.1 Hp), 307.2 N·m (226.7 ft-lbs))
			6000r/min* (30/18.5 kW (40.2/24.8 Hp), 617.4 N·m (455.6 ft-lbs))
			8000r/min (15/11 kW (20.1/14.8 Hp), 286.5 N·m (211.4 ft-lbs))
Mynx 7500/50 II	ISO #50	6000r/min (15/11 kW (20.1/14.8 Hp), 286.5 N·m (211.4 ft-lbs))	6000r/min (22/18.5 kW (29.5/24.8 Hp), 365.5 N·m (269.7 ft-lbs))
			6000r/min* (30/18.5 kW (40.2/24.8 Hp), 617.4 N·m (455.6 ft-lbs))
			8000r/min (15/11 kW (20.1/14.8 Hp), 286.5 N·m (211.4 ft-lbs))
Mynx 9500	ISO #50	6000r/min* (30/18.5 kW (40.2/24.8 Hp), 617.4 N·m (455.6 ft-lbs))	10000r/min** (30/25 kW (40.2/33.5 Hp), 420 N·m (310.0 ft-lbs))

None : Belt-driven * : Gear-driven ** : Built in-driven *** : Direct-driven 1) May differ based on NC

TABLE

Mynx II series offers an optimized table for machine line up enabling to meet the user to handle a wider range of workpieces.

Max weight on Table

Mynx 5400 II, Mynx 5400/50 II
1000 kg (2204.6 lb)

Mynx 6500 II, Mynx 6500/50 II
1300 kg (2866.0 lb)

Mynx 7500 II, Mynx 7500/50 II
1500 kg (3306.9 lb)

Mynx 9500
3500 kg (7716.1 lb)

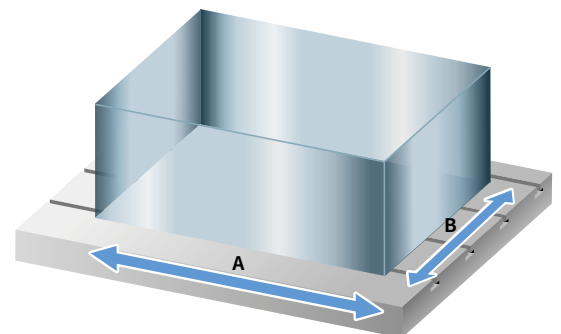
Table size (A x B)

Mynx 5400 II, Mynx 5400/50 II
1200 x 540 mm (47.2 x 21.3 inch)

Mynx 6500 II, Mynx 6500/50 II
1400 x 670 mm (55.1 x 26.4 inch)

Mynx 7500 II, Mynx 7500/50 II
1600 x 750 mm (63.0 x 29.5 inch)

Mynx 9500
2500 x 950 mm (98.4 x 37.4 inch)



TOOL CHANGER

Higher productivity can be achieved with the CAM-type tool changer that supports faster tool changing.

Tool storage capacity

Mynx 5400 II, Mynx 6500 II, Mynx 7500 II

30 {40 OPTION} ea

Mynx 5400/50 II

24 개

Mynx 6500/50 II

24 {30* OPTION} ea

Mynx 7500/50 II

24 {40* OPTION} ea

Mynx 9500

30* {40* OPTION} ea

None : Drum-type CAM magazine

** : Chain type CAM magazine (Servo type)*

Chain type CAM magazine



Taper

Mynx 5400 II, Mynx 6500 II, Mynx 7500 II

ISO #40

Mynx 5400/50 II, Mynx 6500/50 II

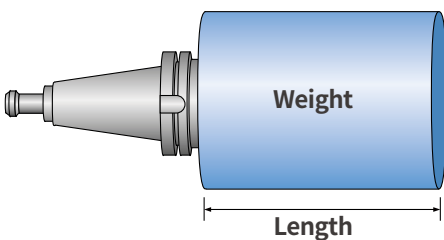
Mynx 7500/50 II, Mynx 9500

ISO #50

Drum-type CAM magazine



Automatic tool changer



Models	Taper	Tool Change Time		Max. Tool Size	
		T-T-T	C-T-C	Length	Weight
Mynx 5400 II	ISO #40	1.3 s	3.7 s	300mm (11.8 inch)	8kg (17.6 lb)
Mynx 6500 II					
Mynx 7500 II					
Mynx 5400/50 II	ISO #50	2.5 s	5.5 s	350mm (13.8 inch)	20kg (33.1 lb)
Mynx 6500/50 II					
Mynx 7500/50 II			6.7 s		
Mynx 9500					

STANDARD | OPTIONAL SPECIFICATIONS

A range of options is available to suit individual requirements.

Description	Features			Mynx 5400 II	Mynx 5400/50 II	Mynx 6500 II	Mynx 6500/50 II	Mynx 7500 II	Mynx 7500/50 II	Mynx 9500
				Mynx 5400 II SIEMENS	Mynx 5400/50 II SIEMENS	Mynx 6500 II SIEMENS	Mynx 6500/50 II SIEMENS	Mynx 7500 II SIEMENS	Mynx 7500/50 II SIEMENS	Mynx 9500 SIEMENS
Spindle	6000 r/min	Belt**	15/11 kW	X	●	X	●	X	X	X
			18.5/15 kW	X	○	X	○	X	●	X
			22/18.5 kW	X	X	X	X	X	○	X
	8000 r/min	Gear*	30/18.5 kW	X	○	X	○	X	○	●
			15/11 kW	●	X	●	X	●	X	X
			15/11 kW	X	○	X	○	X	○	X
10000 r/min	Built in*	25/30 kW	X	X	X	X	X	X	○	
12000 r/min	Direct*	15.6/15.6 kW	○	X	○	X	○	X	X	
Spindle cooling system(Oil cooler)	6000 r/min	Belt**	X	○	X	○	X	○	X	
			Gear*	X	●	X	●	X	●	●
	8000 r/min	Direct**	○	X	○	X	○	X	X	
			Belt*	X	●	X	●	X	●	X
10000 r/min	Built in*	X	X	X	X	X	X	●		
12000 r/min	Direct*	●	X	●	X	●	X	X		
Magazine	Tool storage capacity	24ea	X	●	X	●	X	●	X	
		30ea	●	X	●	○	●	X	●	
		40ea	○	X	○	X	○	○	○	
Tool shank type	ISO #40	BIG Plus BT40	●	X	●	X	●	X	X	
		BIG Plus CAT40	○	X	○	X	○	X	X	
		BIG Plus DIN40	○	X	○	X	○	X	X	
	ISO #50	BIG Plus BT50	X	●	X	●	X	●	●	
		BIG Plus CAT50	X	○	X	○	X	○	○	
BIG Plus DIN50	X	○	X	○	X	○	○			
Coolant	Flood	0.16/0/12 MPa (0.4 kW)	●	●	●	●	●	●	●	
		1.0/0.75 MPa (1.1 kW)	○	○	○	○	○	○	○	
		None	●	●	●	●	●	●	●	
	TSC	2.0/1.9 MPa (1.5 kW)	○	○	○	○	○	○	○	
		2.0/1.3 MPa (4.0 kW)	○	○	○	○	○	○	○	
		2.0 MPa (4.0kW)	○	○	○	○	○	○	○	
		3.0/3.0 MPa (2.9 kW)	○	○	○	○	○	○	○	
		7.0 MPa (7.5 kW)	○	○	○	○	○	○	○	
		Shower	○	○	○	○	○	○	○	
	Top Flushing	○	○	○	○	○	○	○		
Oil Skimmer	○	○	○	○	○	○	○			
Chip pan	Belt type	n/a	n/a	n/a	n/a	n/a	n/a	○		
Chip disposal	Chip conveyor	Type	Hinged plate	○	○	○	○	○	○	
		Magnetic scraper	○	○	○	○	○	○	○	
	Chip bucket	Outlet	○	○	○	○	○	○	○	
		Direction	Right side/Left side	○	○	○	○	○	○	
Precision machining option	Smart Thermal Compensation	Capacity	220 / 300 / 380	○	○	○	○	○	○	
		Type	ROTATION / FORKLIFT	○	○	○	○	○	○	
Measurement & Automation	Automatic tool measurement	Sensorless type***	○	○	○	○	○	○	○	
		Linear scale	X / Y / Zaxis	○	○	○	○	○	○	
	Automatic tool breakage detection	AICC II (200 block)	○	○	○	○	○	○	○	
		TS27R	○	○	○	○	○	○	○	
Accessories	Automatic workpiece measurement	OTS	○	○	○	○	○	○	○	
		Schubert system elektronik GmbH / BK97	○	○	○	○	○	○	○	
	Automatic front door with safety device	OMP60	○	○	○	○	○	○	○	
		Work light	LED lamp	○	○	○	○	○	○	
	Operator call lamp	3-Color signal tower(Led)	○	○	○	○	○	○	○	
		Sensorless type (Only spindle)	○	○	○	○	○	○	○	
	Smart thermal control	Assembly & Operation tools kit	○	○	○	○	○	○	○	
		Air blower	○	○	○	○	○	○	○	
	Customized special option	4th axis preparation cabling for Servo/1-Pneumatic piping	Factory readt made	○	○	○	○	○	○	○
			Air gun	○	○	○	○	○	○	○
Coolant gun		○	○	○	○	○	○	○		
		Mist collector	○	○	○	○	○	○	○	
Anchoring ¹⁾		Water soluble Coolant Chiller ²⁾	○	○	○	○	○	○		
		TSA ³⁾	○	○	○	○	○	○		
Feedback system		0.54 MPa	○	○	○	○	○	○		
		HEIDENHAIN	○	○	○	○	○	○		
Raising block	150 / 200 / 300 mm	○	○	○	○	○	○			
Side auto door	680 X 1000 (W X H) set	○	○	○	○	○	○			
AWC	8Pallet	○	○	○	○	○	○			
Auto tool length measurement	RENISHAW / LTS	○	○	○	○	○	○			
Auto tool breakage detection	MSC/BK9(Needle type on magazine)	○	○	○	○	○	○			

* Please contact DN Solutions to select detail specifications.

1) Please refer to foundation drawing in relation to anchoring. If more detail information want, consult with DN Solutions service

2) Technical consultation is mandatory for the chilling of non-water soluble coolant

3) In case of TSC is not required and only TSA is needed, this option can be selected.

Spindle cooling system (Oil cooler) is standard *Sensorless type (only Spindle) (Mynx 5400~7500II)

****When using a semi-synthetic type or synthetic type, contact our sales representative or service center in advance.

● Standard ○ Optional X Not applicable

Fire Safety Precautions | There is a high risk of fire when using non-water-soluble cutting fluids, processing flammable materials, neglecting the controlled and careful use of coolants and modifying the machine without the consent of the manufacturer. Always check the SAFETY GUIDELINES carefully before using the machine.

PERIPHERAL EQUIPMENT

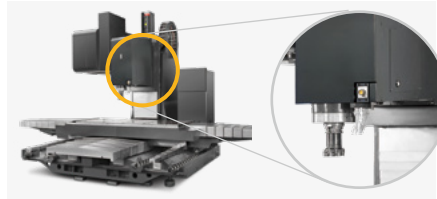
Linear Scale OPTION

Using the linear scale feedback system, accuracy of the machine can be further improved since the X, Y and Z axes can be controlled to correct positions.



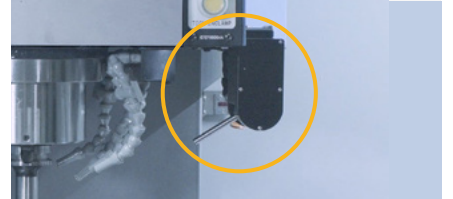
Smart thermal compensation (Mynx 9500 only)

Smart thermal compensation function fitted as standard optimizes machine accuracy of the spindle and structure by reducing the effects of heat build-up during extended periods of operation.



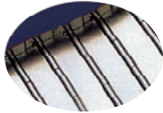
PFC(Programmable Flood Coolant) OPTION

The coolant nozzle direction is controlled by a program. It is adjusted according to the required angle (steps 1 to 15), and it can be used for various tool lengths, thereby improving tool life.



Chip conveyor OPTION

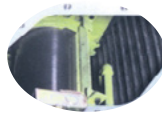
Hinged type



Magnetic scraper type



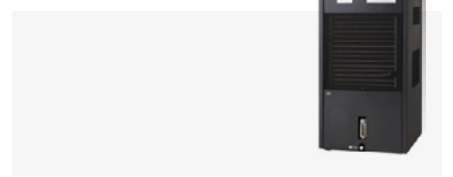
Drum filter type



Chip conveyor type	Material	Description
Hinged type	Steel	Hinged belt chip conveyor, which is most commonly used for steel work [for cleaning chips longer than 30mm(1.2inch)], is available as an option.
Magnetic scraper type	Cast Iron	Magnetic scraper type chip conveyor, which is ideal for die-casting work [for cleaning small chips], is available as an option.
Drum filter type	Aluminium	Drum filter type chip conveyor, which is ideal for aluminium work [for filtering small chips], is available as an option.

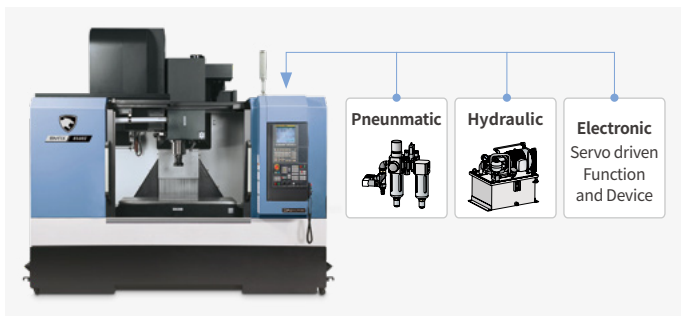
Oil Cooler OPTION

An oil cooler correlated to room temperature can be equipped for a long-term operation at high speed. Cooling oil circulates around the spindle bearings to prevent thermal error of the spindle and maintain machining accuracy.



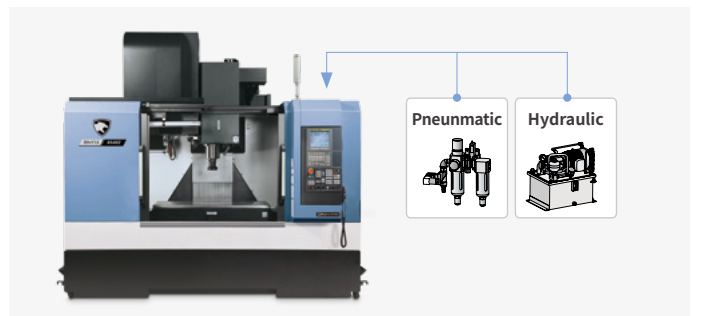
4th axis auxiliary device interface OPTION

Users who wish to set up a rotary axis on the table to increase application flexibility are encouraged to contact DN Solutions in advance.



Hydraulic / Pneumatic fixture line OPTION

The user should prepare pipelines for hydraulic / pneumatic fixtures whose detailed specifications should be determined by discussion with DN Solutions.



AWC system OPTION

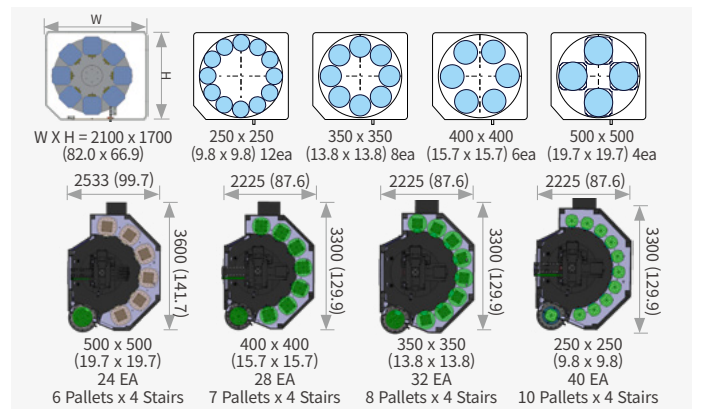
A compact automation system providing fast, reliable and high productivity workpiece change capabilities.



Description	Pallet size	No. of pallets	Max. workpiece dia. x height	Max. workpiece weight
AWC	250x250 mm (9.8x9.8 inch)	12ea	∅300x350 mm (11.8x13.8 inch)	130 kg (286.6 lb)
	350x350 mm (13.8x13.8 inch)	8ea	∅400x350 mm (15.7x13.8 inch)	300 kg (661.4 lb)
	400x400mm (15.7x15.7 inch)	6ea	∅450x350 mm (17.7x13.8 inch)	300 kg (661.4 lb)
	500x500mm (19.7x19.7 inch)	4ea	∅550x350 mm (21.7x13.8 inch)	300 kg (661.4 lb)

Pallet storage-table configuration

unit : mm (inch)



DN SOLUTIONS FANUC i PLUS

DN Solutions Fanuc i Plus is optimized for maximizing customer productivity and convenience.

15" Screen + New OP

DN Solutions Fanuc i Plus' operation panel enhances operating convenience by incorporating common-design buttons and layout. It features a Qwerty keyboard for fast and easy data input and operation.

DN Solutions Fanuc i Plus

- 15 inch color display
- Intuitive and user-friendly design

USB & PCMCIA card QWERTY keyboard

- EZ-guide i standard
- Ergonomic operator panel
- 2MB Memory
- Hot key



iHMI touchscreen OPTION

iHMI provides an intuitive interface that uses a touchscreen for quick and easy operation.

Range of applications

Providing various applications related to planning, machining, improvement and utility, for customer convenience.



NUMERIC CONTROL SPECIFICATIONS



Item	Specifications	DN Solutions Fanuc i (0i Plus) Mynx 4digit
Controlled axis	Controlled axes	3 (X,Y,Z)
	Simultaneously controlled axes	4 axes
	Additional controlled Axis	●
Data input/output	Fast data server	○
	Memory card input/output	●
	USB memory input/output	●
	Large capacity memory(2GB)*2	○
Interface function	Available Option only with 15" Touch LCD (iHMI Only) *2)	○
	Embedded Ethernet	●
	Fast Ethernet	○
Operation	Enhanced Embedded Ethernet function	●
	DNC operation	Included in RS232C interface.
	DNC operation with memory card	●
Program input	Workpiece coordinate system	G52 - G59
	Addition of workpiece coordinate system	G54.1 P1 X 48 (48 pairs)
	Tool number command	●
	Tilted working plane indexing command	G68.2 TWP
Feed function		○
	AI contour control I	G5.1 Q, 40 Blocks
	AI contour control II	G5.1 Q, 200 Blocks
	AI contour control II	G5.1 Q, 600 Blocks
	AI contour control II	G5.1 Q, 1000 Blocks *1)
Operation guidance function	High smooth TCP	X
	EZ Guidei (Conversational Programming Solution)	●
	iHMI with Machining Cycle	Only with 15" Touch LCD standard *2)
Setting and display	EZ Operation package	X
	CNC screen dual display function	●
Network	FANUC MTConnect	⊕
	FANUC OPC UA	⊕
Others	Display unit	10.4" color LCD
		15" color LCD
		15" color LCD with Touch Panel
		640M(256KB)_500 programs
		1280M(512KB)_1000 programs
		2560M(1MB)_1000 programs
		5120M(2MB)_1000 programs
		10240M(4MB)_1000 programs
		20480M(8MB)_1000 programs
		2560M(1MB)_2000 programs
		5120M(2MB)_4000 programs
		10240M(4MB)_4000 programs
	20480M(8MB)_4000 programs	

*1) The number of look-ahead blocks may be changed or limited depending on the peripheral device or the configuration of the internal NC system.

*2) Available Option only with Fanuc i plus iHMI

● Standard ○ Optional X N/A ⊕ Available
Network: FANUC MT Connect and FANUC OPC UA available.

EZ WORK

The software developed by DN Solutions provides a range of different functions designed for fast, efficient and convenient operation.

EZ work

The EZ work package delivers speed and efficiency. This menu-driven innovation not only helps customers reduce setup times, but also simplifies common tasks and procedures, reducing the potential for errors. EZ work reduces operating time, protects machinery, enhances quality and speeds up maintenance interventions.



Thermal Compensation

A function to maintain high-precision machining quality by analyzing and correcting the amount of thermal displacement of a structure through a temperature sensor



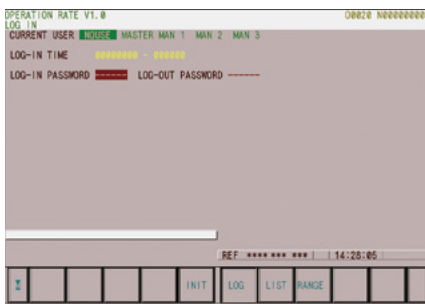
M/G-Code List

Functional description of M code and G code



Tool Management

Function to manage tool information [Tool information / Tool No. / Tool condition (normal, large diameter, worn / damaged, used for the rst time, manual) / Tool name]



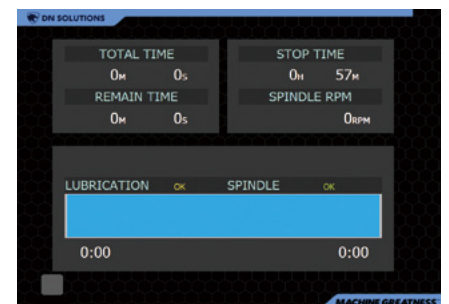
Operation Rate

Machine operation history management function by date based on load



Adaptive Feed Control

Function to control feedrate so that the cutting can be carried out at a constant load (To adapt to the spindle load set up with constant load feedrate control function)



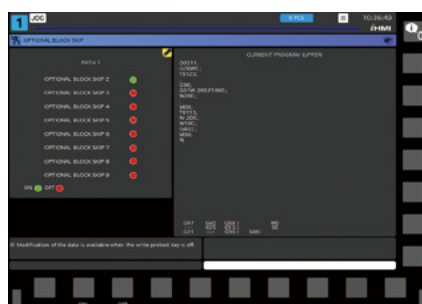
Spindle Warm Up

A function that assists spindle warm-up for spindle life when the spindle has not been used for a certain period of time



ATC Recovery

Function to view detailed info with recommended actions and to perform step-by-step operation manually (when an alarm is triggered during an ATC operation)



Addition of Optional Block Skip

In addition to the OPTIONAL BLOCK SKIP of the operation panel, the function to skip a specific block selected in the machining program

CONVENIENT OPERATION

HEIDENHAIN TNC620

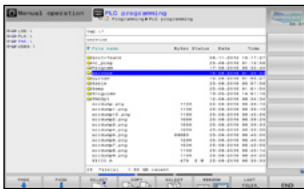
Superior hardware specifications

The TNC 620 features optimized motion control, short block processing times and special control strategies. Together with its uniform digital design and its integrated digital drive control (including inverters), it enables you to achieve high machining speeds and the best possible contour accuracy.

- 15.6-inch display
- 21GB Storage memory
- 1024 look ahead blocks
- High user convenience with folder structure data management



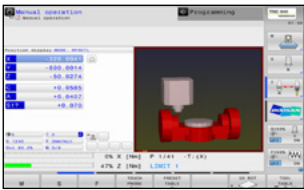
Conversational convenient function



Data are controlled in the folder structure; convenient communication via USB devices



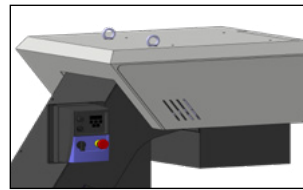
KinematicOpt & KinematicComp (Touch probe cycle for automatic measurement) **OPTION**



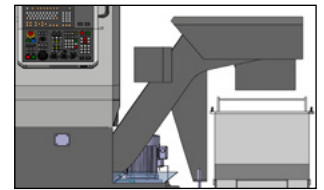
Collision protection system **OPTION**



Adaptive feed control **OPTION**



Various built-in pattern cycles for a wider scope of application (Software standard)



Graphic simulation

NUMERIC CONTROL SPECIFICATIONS



Item		Specifications	TNC620
			Mynx series
Controlled axis	Controlled axis		3 (X,Y,Z)
	Simultaneously controlled axis		4 axis
Data input/output	USB memory input/output		●
Interface function	Embedded ethernet		●
Feed function	Look-ahead	5000 blocks	●
Axis compensation	KinematicsOpt	Automatic measurement and optimization of machine kinematics	○
Collision monitoring	Dynamic collision monitoring (DCM)		X
Network	MTConnect		⊛
Others	Display unit	15" color LCD with touch panel	●
	Part program storage size & number of registerable programs	4GB	●

● Standard ○ Optional X N/A ⊛ Available

CONVENIENT OPERATION

SIEMENS 828D

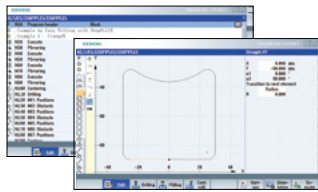
15.6" Screen + New OP

The newly-designed operation panel improves the customer convenience by incorporating and using common-design buttons and layouts, and includes the familiar QWERTY keyboard for fast and easy operation.

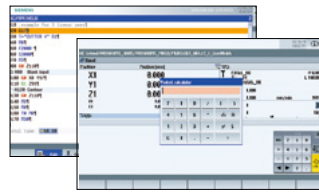
- 15.6-inch display
- 10MB high capacity user memory
- USB & ethernet (standard)
- QWERTY keyboard (standard)
- High-speed calculation and simulation can be fulfilled by improved processor functionality



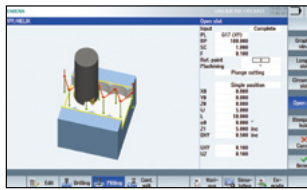
Conversational convenient function



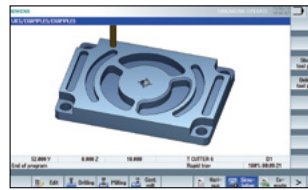
Shop Mill Part Programming



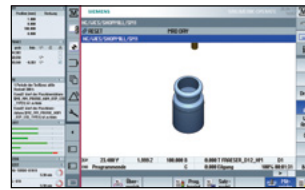
Smart function



Advanced program language programGUIDE



Simulation and machining contour monitoring



Side screen widget

NUMERIC CONTROL SPECIFICATIONS



Item	Specifications	S828D	
		Mynx	
Controlled axis	Controlled axes	-	3 axis
	Simultaneously controlled axes	-	3 axis
Data input/output	Memory card input/output	(Local drive)	X
	USB memory input/output		X
Interface function	Ethernet	(X130)	●
Operation	On network drive	(without EES option, Extcall)	●
	On USB storage medium, e.g. memory stick	(without EES option, Extcall)	●
Program input	Workpiece coordinate system	G54 - G57	●
	Addition of workpiece coordinate system	G505 - G599	●
Interpolation & Feed function	Advanced surface		●
	Top surface		○
	Look ahead number of block	S/W version 4.95	450
Programming & Editing function	3D simulation, finished part		●
	Simultaneous recording		●
	Measure kinematics		X
Operation Guidance Function	DXF Reader for PC integrated in SINUMERIK Operate		○
	ShopMill		●
Setting and display	EZ Work		●
	Operation via a VNC viewer		●
Network	MTConnect		⊕
	OPCUA		○
Etc. function	15.6" color display with touch screen		●
	19" color display without touch screen		X
	21.5" color display with touch screen		X
	CNC user memory	10 MB	●
	Expansion by increments	2 ~ 12 MB	○
	Collision avoidance		X
Collision avoidance ECO (machine, working area)		X	

POWER | TORQUE

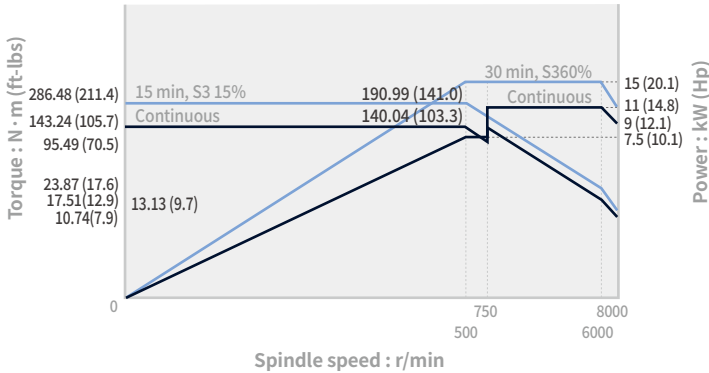
FANUC

Mynx 5400 II, Mynx 6500 II, Mynx 7500 II

8000 r/min, Direct

Motor power 15/11 kW (20.1/14.8 Hp)

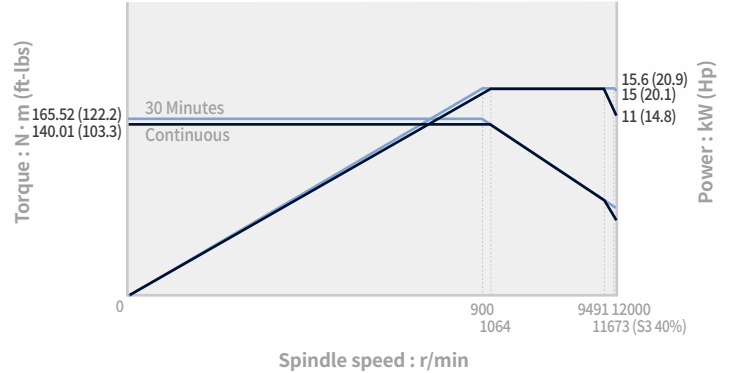
Torque 286.5 N·m (211.4 ft-lbs)



12000 r/min, Direct OPTION

Motor power 15.6 kW (20.9 Hp)

Torque 165.5 N·m (122.1 ft-lbs)

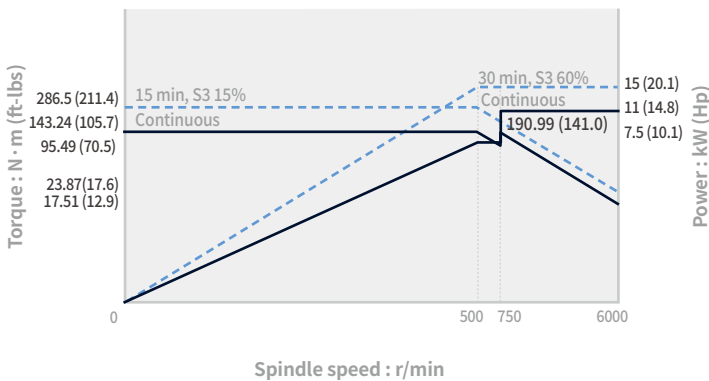


Mynx 5400/50 II, Mynx 6500/50 II

6000 r/min, Belt

Motor power 15/11 kW (20.1/14.8 Hp)

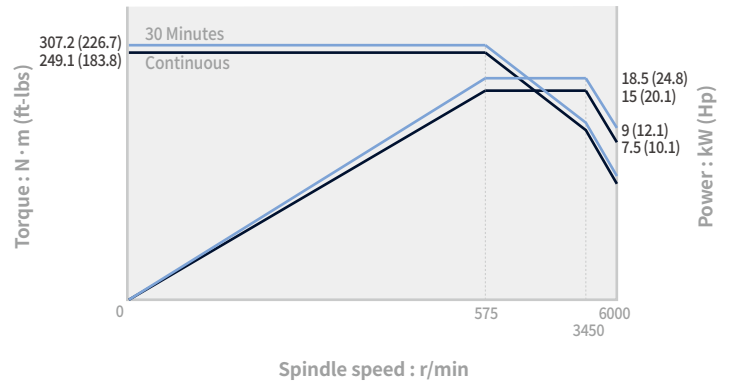
Torque 286.5 N·m (211.4 ft-lbs)



6000 r/min, Belt OPTION

Motor power 18.5/15 kW (24.8/20.1 Hp)

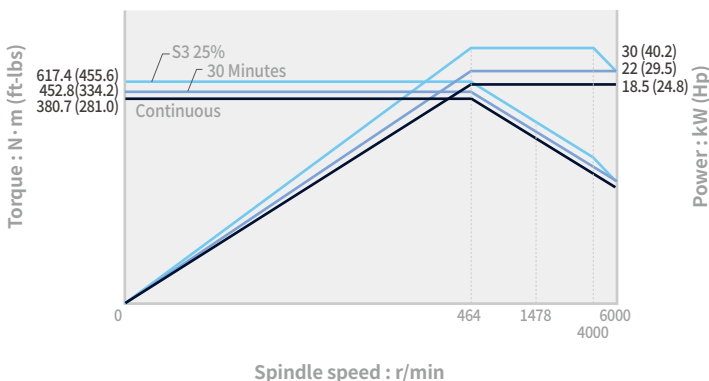
Torque 307.2 N·m (226.7 ft-lbs)



6000 r/min, Gear OPTION

Motor power 30/18.5 kW (40.2/24.8 Hp)

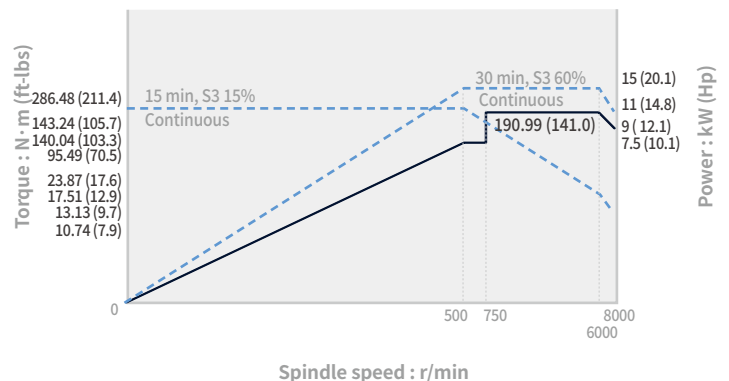
Torque 617.4 N·m (455.6 ft-lbs)



8000 r/min, Belt OPTION

Motor power 15/11 kW (20.1/14.8 Hp)

Torque 286.5 N·m (211.4 ft-lbs)



POWER | TORQUE

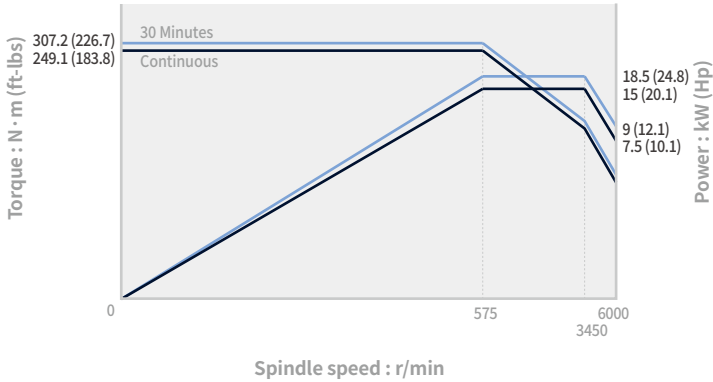
FANUC

Mynx 7500/50 II

6000 r/min, Belt

Motor power 18.5/15 kW (24.8/20.1 Hp)

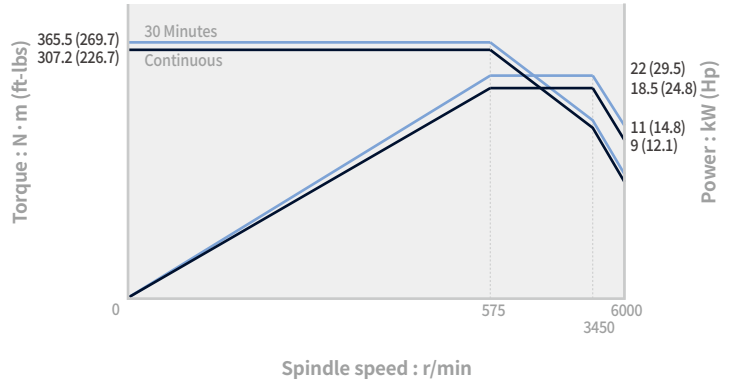
Torque 307.2 N·m (226.7 ft-lbs)



6000 r/min, Belt OPTION

Motor power 22/18.5 kW (29.5/24.8 Hp)

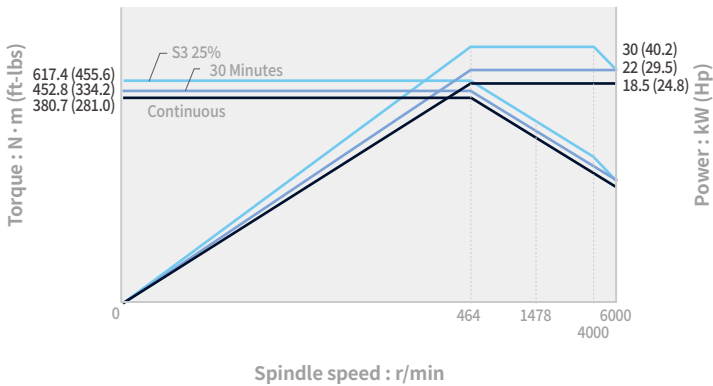
Torque 365.5 N·m (269.7 ft-lbs)



6000 r/min, Gear OPTION

Motor power 30/18.5 kW (40.2/24.8 Hp)

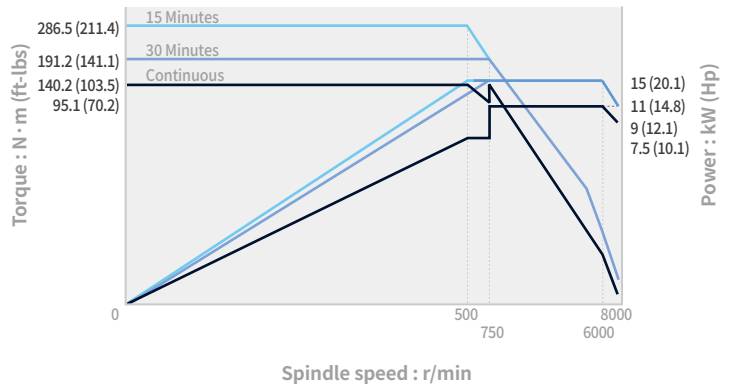
Torque 617.4 N·m (455.6 ft-lbs)



8000 r/min, Belt OPTION

Motor power 15/11 kW (20.1/14.8 Hp)

Torque 286.5 N·m (211.4 ft-lbs)

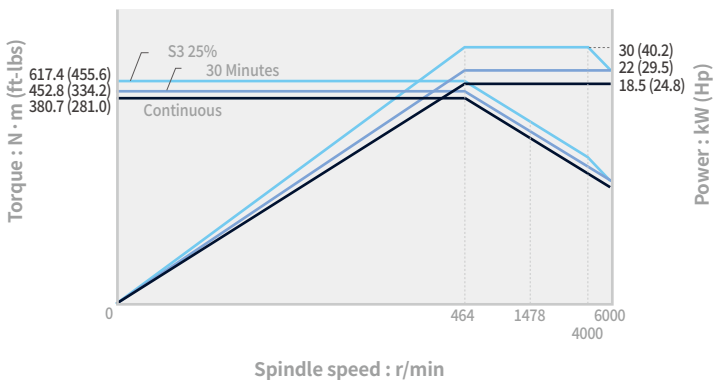


Mynx 9500

6000 r/min, Gear

Motor power 30/18.5 kW (40.2/24.8 Hp)

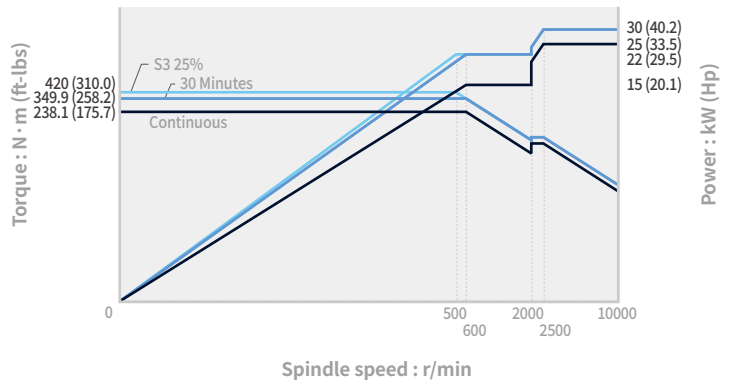
Torque 617.4 N·m (455.6 ft-lbs)



10000 r/min, Built in OPTION

Motor power 30/25 kW (40.2/33.5 Hp)

Torque 420 N·m (310.0 ft-lbs)



POWER | TORQUE

SIEMENS

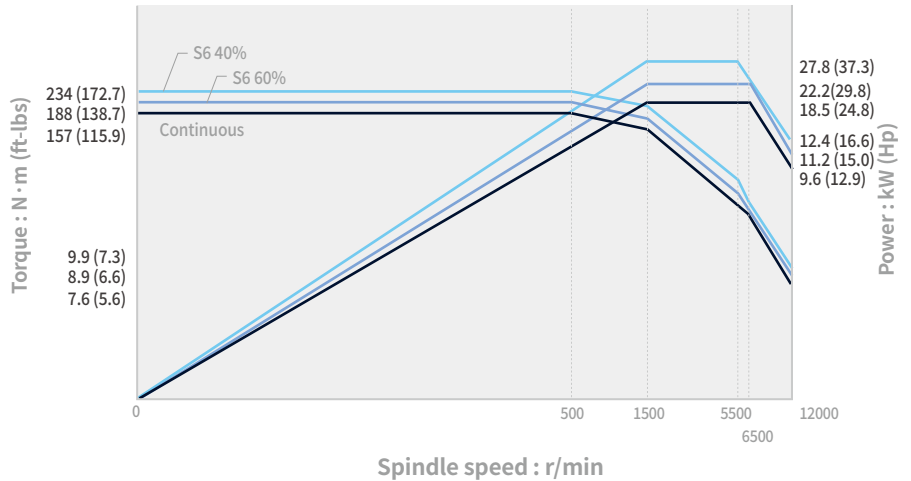
12000 r/min, Direct

Motor power

27.8/18.5 kW (37.3/24.8 Hp)

Torque

234.0 N·m (172.7 ft-lbs)



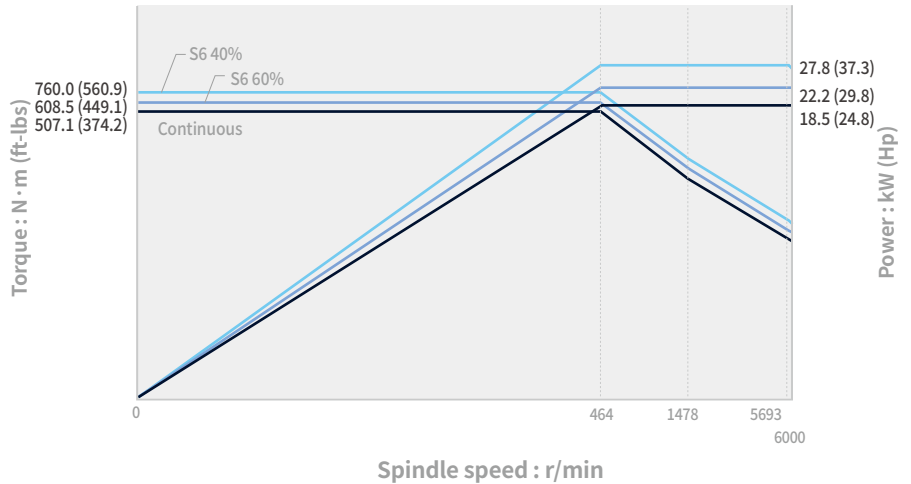
6000 r/min, Gear

Motor power

27.8/18.5 kW (37.3/24.8 Hp)

Torque

760.0 N·m (560.9 ft-lbs)



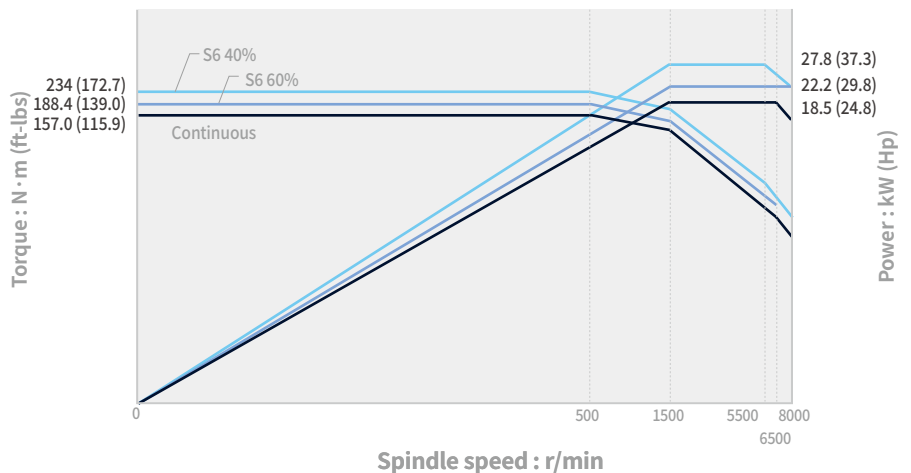
8000 r/min, Belt

Motor power

27.8 /18.5 kW (37.3/24.8 Hp)

Torque

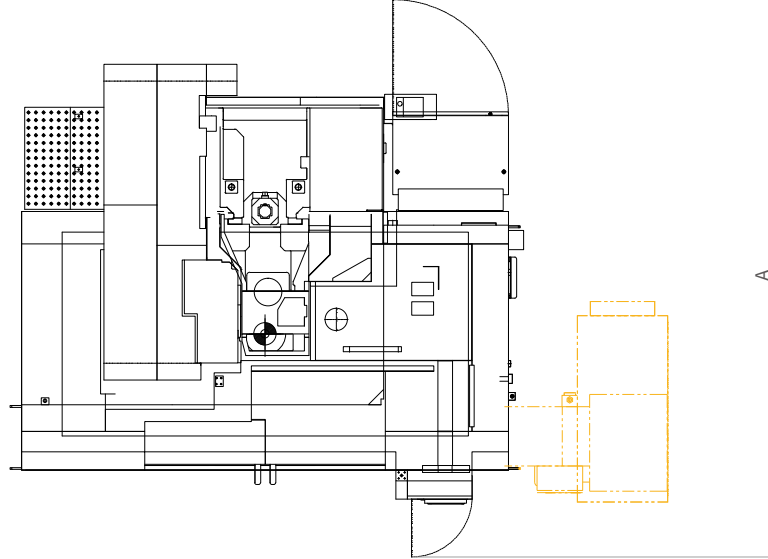
234.0 N·m (172.7 ft-lbs)



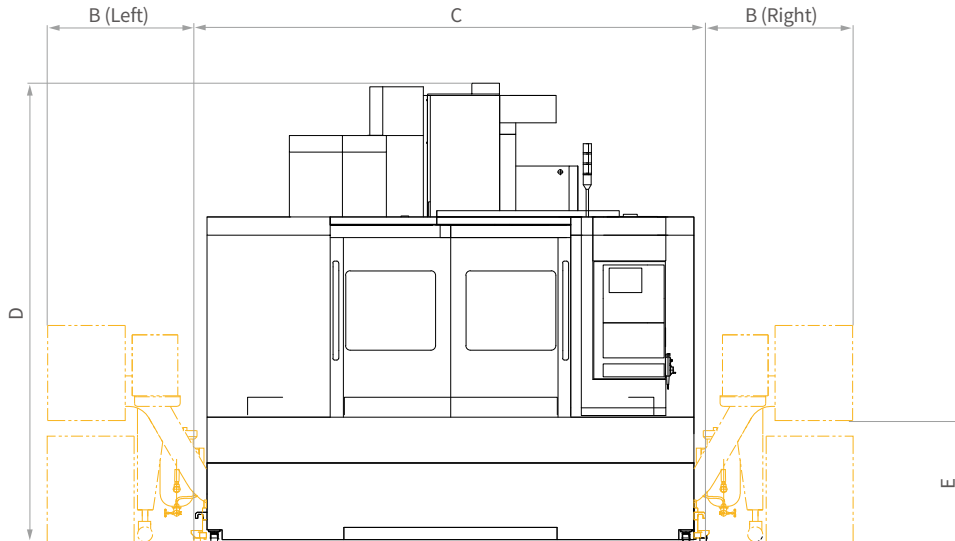
DIMENSIONS

Unit : mm (inch)

TOP



FRONT



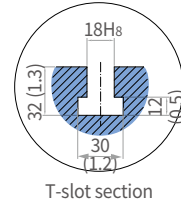
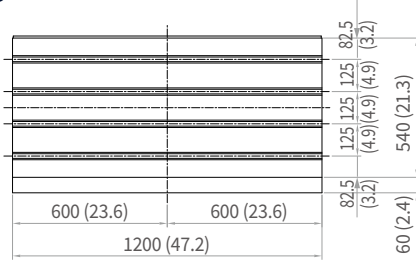
	A (Max. machine length)	B* (Additional width to accommodate the side chip conveyor)	C (Max. machine width)	D (Max. machine height)	E (Height from the floor to the chip outlet)
Mynx 5400 II	3450 (135.8)	Left & Right : 930 (36.6)	3350 (131.9)	3020 (118.9)	830 (32.7)
Mynx 5400/50 II	3450 (135.8)	Left & Right : 930 (36.6)	3350 (131.9)	2920 (115.0)	830 (32.7)
Mynx 6500 II	3670 (144.5)	Left & Right : 930 (36.6)	3350 (131.9)	3110 (122.4)	830 (32.7)
Mynx 6500/50 II	3670 (144.5)	Left & Right : 930 (36.6)	3350 (131.9)	3020 (118.9)	830 (32.7)
Mynx 7500 II	4410 (173.6)	Left & Right : 1060 (41.7)	3900 (153.5)	3230 (127.2)	980 (38.6)
Mynx 7500/50 II	4680 (184.3)	Left & Right : 1060 (41.7)	4050 (159.4)	3300 (129.9)	980 (38.6)
Mynx 9500	5350 (210.6)	Left & Right : 1170 (46.1)	6560 (258.3)	3600 (141.7)	770 (30.3)

* Contact DN Solutions for more information to rear chip conveyor.

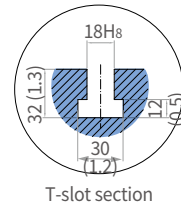
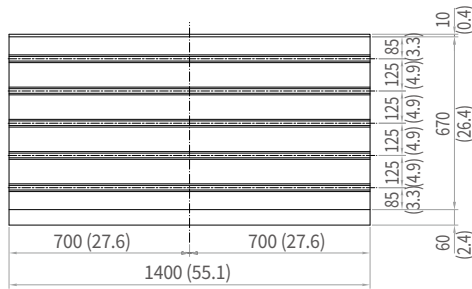
TABLE DIMENSIONS

Unit : mm (inch)

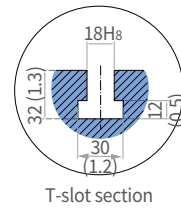
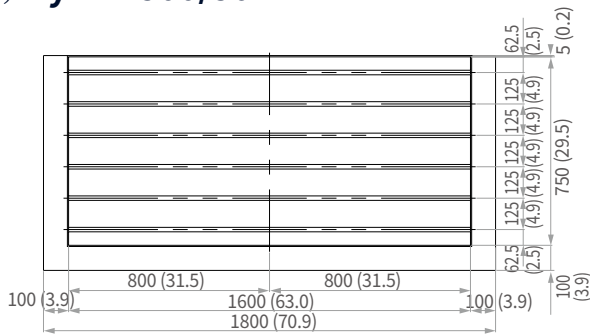
Mynx 5400 II, Mynx 5400/50 II



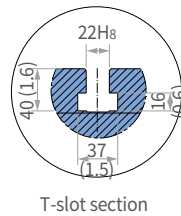
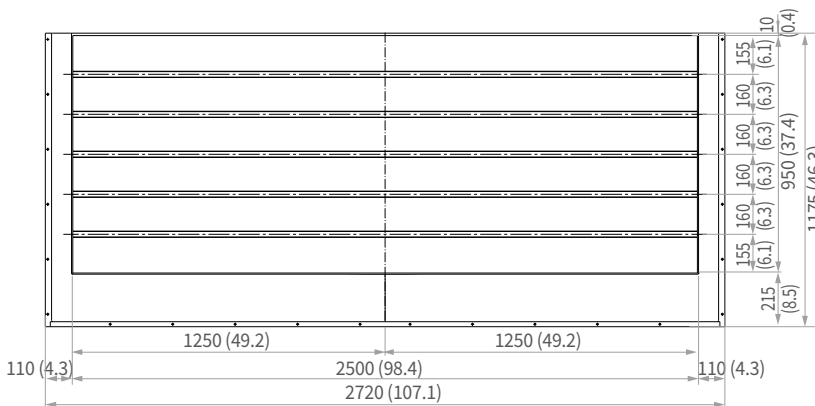
Mynx 6500 II, Mynx 6500/50 II



Mynx 7500 II, Mynx 7500/50 II



Mynx 9500



MACHINE SPECIFICATIONS

Description		Unit	Mynx 5400 II	Mynx 5400/50 II	Mynx 6500 II	Mynx 6500/50 II	Mynx 7500 II	Mynx 7500/50 II	Mynx 9500	
Travels	Travel distance	X axis	1020 (40.2)		1270 (50.0)		1525 (60.0)		2500 (98.4)	
		Y axis	550 (21.7)		670 (26.4)		770 (30.3)		950 (37.4)	
		Z axis	530 (20.9)		625 (24.6)		625 (24.6)		850 (33.5)	
	Distance from spindle nose to table top	mm (inch)	150 ~ 680 (5.9~26.8)	200 ~ 730 (7.9~28.7)	150 ~ 775 (5.9~30.5)	200 ~ 825 (7.9~32.4)	150 ~ 775 (5.9~30.5)	200 ~ 825 (7.9~32.4)	200 ~ 1000 (7.9~39.4)	
Table	Table size	mm (inch)	1200 x 540 (47.2 x 21.3)		1400 x 670 (55.1 x 26.4)		1600 x 750 (63.0 x 29.5)		2500 x 950 (98.4 x 37.4)	
	Table loading capacity	kW (Hp)	1000 (1341.0)		1300 (1743.3)		1500 (2011.5)		3500 (4693.5)	
	Table surface type	mm	T-SLOT (4-125 x 18H8)		T-SLOT (5-125 x 18H8)		T-SLOT (6-125 x 18H8)		T-SLOT (5-160 x 22H8)	
Spindle	Max. spindle speed	Direct	r/min	8000 {12000}	-	8000 {12000}	-	8000 {12000}	-	
		Belt	r/min	-	6000 {6000} {8000}	-	6000 {6000} {8000}	-	6000 {6000} {8000}	
		Gear	r/min	-	{6000}	-	{6000}	-	{6000}	
		Built in	r/min	-	-	-	-	-	{10000}	
	Taper	-	ISO #40	ISO #50	ISO #40	ISO #50	ISO #40	ISO #50	ISO #50	
	Spindle power	Direct	kW (Hp)	15/11 {15.6} (20.1/14.8 {20.9})	-	15/11 {15.6} (20.1/14.8 {20.9})	-	15/11 {15.6} (20.1/14.8 {20.9})	-	
		Belt	kW (Hp)	-	15/11 {18.5/15} {15/11} (20.1/14.8 {24.8/20.1} {20.1/14.8})	-	20/18.5 {18.5/18.5} {15/11} (26.8/24.8 {24.8/24.8} {20.1/14.8})	-	18.5/15 {22/18.5} {15/11} (24.8/18.5 {29.5/24.8} {20.1/14.8})	
		Gear	kW (Hp)	-	{30/18.5} ((40.2/24.8))	-	{30/18.5} ((40.2/24.8))	-	{30/18.5} ((40.2/24.8))	
		Built in	kW (Hp)	-	-	-	-	-	{30/25} ((40.2/33.5))	
	Max. spindle torque	Direct	N · m (ft-lbs)	286.5 {165.5} (211.4 {122.1})	-	286.5 {165.5} (211.4 {122.1})	-	286.5 {165.5} (211.4 {122.1})	-	
Belt		N · m (ft-lbs)	-	286.5 {307.2} {286.5} (211.4 {226.7} {211.4})	-	286.5 {307.2} {286.5} (211.4 {226.7} {211.4})	-	307.2 {365.5} {286.5} (226.7 {269.7} {211.4})		
Gear		N · m (ft-lbs)	-	{617.4} ((455.6))	-	{617.4} ((455.6))	-	{617.4} ((455.6))		
Built in		N · m (ft-lbs)	-	-	-	-	-	{420} ((310.0))		
Feedrates	Rapid traverse rate	X axis	N · m (ft-lbs)		30 (22.1)		16 (11.8)			
		Y axis	N · m (ft-lbs)		30 (22.1)		16 (11.8)			
		Z axis	N · m (ft-lbs)		24 (17.7)		16 (11.8)			
Automatic Tool Changer	Rapid traverse rate	Tool shank	-	BT 40 {CAT40/DIN40}	BT 50 {CAT50/DIN50}	BT 40 {CAT40/DIN40}	BT 50 {CAT50/DIN50}	BT 40 {CAT40/DIN40}	BT 50 {CAT50/DIN50}	
		Pull stud	-	PS806	P50T-1 45deg	PS806	P50T-1 45deg	PS806	P50T-1 45deg	
	Tool storage capa.	ea	30 {40}	24	30 {40}	24 {30}	30 {40}	24 {40}	30 {40}	
	Max. tool diameter	Continuous	mm (inch)	80 {76} (3.1 {3.0})	125 (4.9)	80 {76} (3.1 {3.0})	125 (4.9)	80 {76} (3.1 {3.0})	125 (4.9)	
		Without Adjacent Tools	mm (inch)	125 (4.9)	220 (8.7)	125 (4.9)	220 (8.7)	125 (4.9)	220 (8.7)	
	Max. tool length	mm (inch)	300 (11.8)	350 (13.8)	300 (11.8)	350 (13.8)	300 (11.8)	350 (13.8)		
	Max. tool weight	kg (lb)	8 (17.6)	20 (44.1)	8 (17.6)	20 (44.1)	8 (17.6)	20 (44.1)		
	Max. tool moment	N · m (ft-lbs)	5.88 (4.3)	22 (16.2)	5.88 (4.3)	22 (16.2)	5.88 (4.3)	22 (16.2)		
	Tool selection		MEMORY RANDOM							
	Tool change time (Tool-to-tool)	sec	1.3	2.5	1.3	2.5	1.3	2.5		
Tool change time (Chip-to-chip)	sec	3.7	5.5	3.7	5.5	3.7	5.5			
Power source	Electric power supply (rated capacity)	Direct	kVA	32.2 {44.4}	-	35.1 {47.3}	-	38.5 {50.7}	-	
		Belt	kVA	-	36.1 {36.1} {40}	-	39.4 {44.6}	-	47.3 {51.8} {42.9}	
		Gear	kVA	-	{47.7}	-	{48.4}	-	{51.8}	
		Built in	kVA	-	-	-	-	-	{54.2}	
Compressed air supply	Mpa	0.54								
Tank capacity	Coolant tank capacity	L	420			470			500	
Machine Dimensions	Height	mm (inch)	F_3012 (118.6) H/S_3117 (122.7)	2920 (115.0)	F_3107 (122.3) H/S_3216 (126.6)	3016 (118.7)	F_3227 (127.0) H/S_3337 (131.4)	3292 (129.6)	3598 (141.7)	
	Length	mm (inch)	2467 (97.1)	2467 (97.1)	2692 (106.0)	2692 (106.0)	3900 (153.5)	3900 (153.5)	4315 (169.9)	
	Width	mm (inch)	3350 (131.9)	3350 (131.9)	3350 (131.9)	3350 (131.9)	4050 (159.4)	4050 (159.4)	6480 (255.1)	
	Weight	kg (lb)	7000 (15432.1)	7500 (16534.4)	9000 (19841.3)	9500 (20943.6)	13500 (29762.0)	13500 (29762.0)	23000 (50705.6)	
Control	NC system	-	DN Solutions Fanuc i Plus, Fanuc 32i {SIEMENS S828D / HEIDENHAIN TNC 620}							

RESPONDING TO CUSTOMERS **ANYTIME, ANYWHERE**

DN SOLUTIONS GLOBAL NETWORK

66 COUNTRIES | **140** + SALES NETWORKS | **3** FACTORIES | **6** REGIONAL HQS



CUSTOMER SUPPORT AND SERVICES

WE'RE THERE FOR YOU WHENEVER YOU NEED US.

We help our customers operate at maximum efficiency by providing them with a range of tried, tested and trusted services - from pre-sales consultancy to post-sales support.



FIELD SERVICES

- On-site service
- Machine installation and testing
- Scheduled preventive maintenance
- Machine repair service



PARTS SUPPLY

- Supplying a wide range of original DN Solutions spare parts
- Parts repair service



TRAINING

- Programming, machine setup and operation
- Electrical and mechanical maintenance
- Applications engineering



TECHNICAL SUPPORT

- Supports machining methods and technology
- Responds to technical queries
- Provides technical consultancy

**Head Office**

19F, 10, Tongil-ro, Jung-gu, Seoul,
Republic of Korea, 04527

Tel: +82-2-6972-0370
Fax: +82-2-6972-0400

DN Solutions America

360 E State PKWY,
Schaumburg, IL. 60173,
United states

Tel: +1-315-265-7500

DN Solutions Europe

Emdener Strasse 24, D-41540
Dormagen, Germany

Tel: +49-2133-5067-100
Fax: +49-2133-5067-111

DN Solutions India

No.82, Jakkur Village
Yelahanka Hobli,
Bangalore-560064

Tel: +91-80-2205-6900
E-mail: india@dncompany.com

DN Solutions China

Room 101,201,301,
Building 39 Xinzhuan Highway
No.258 Songjiang District
China Shanghai (201612)

Tel: +86 21-5445-1155
Fax: +86 21-6405-1472

DN Solutions Vietnam

M.O.R.E building 2F, 40A-40B Ut
Tich Street, 04 Ward 04,
District Tan Binh District,
Ho Chi Minh City, Vietnam

Tel: +84 28-7304-0163

DN Solutions Mexico

Avenida Parque Bicentenario
#100 Nave M65L3-6,
Fraccionamiento San Isidro
Business Park,
Santa Rosa Jauregui,
Querétaro, México

E-mail: efrain.figueroa@dncompany.com

Sales inquiry

sales@dncompany.com